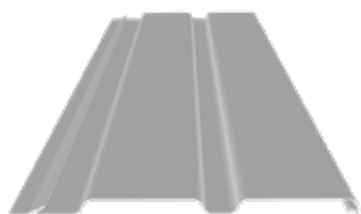
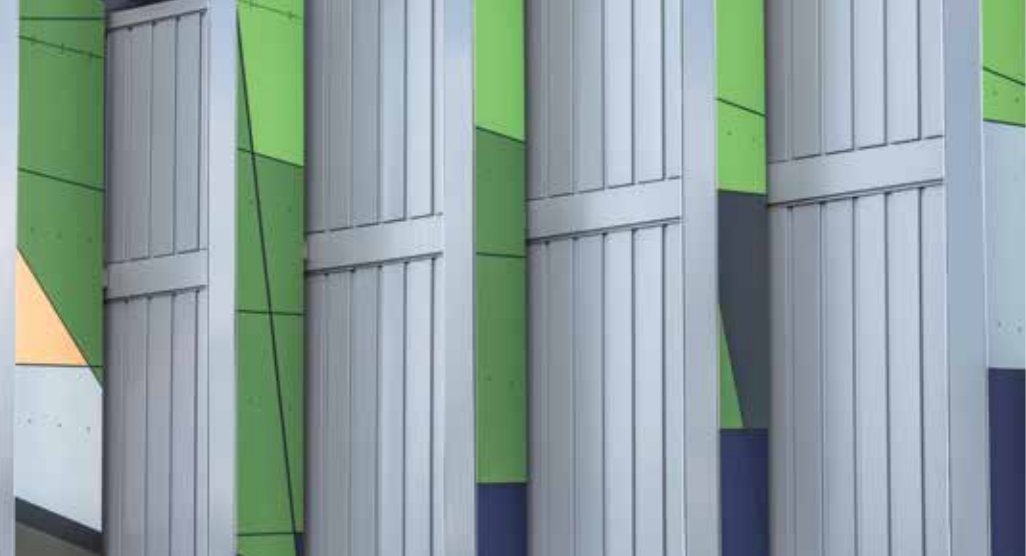


STRAMIT ARCHITECTURAL RANGE

Where beautiful
design meets quality
Australian made* steel

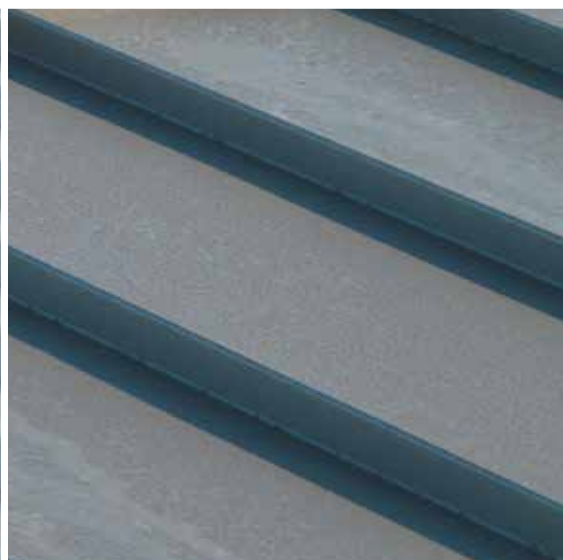
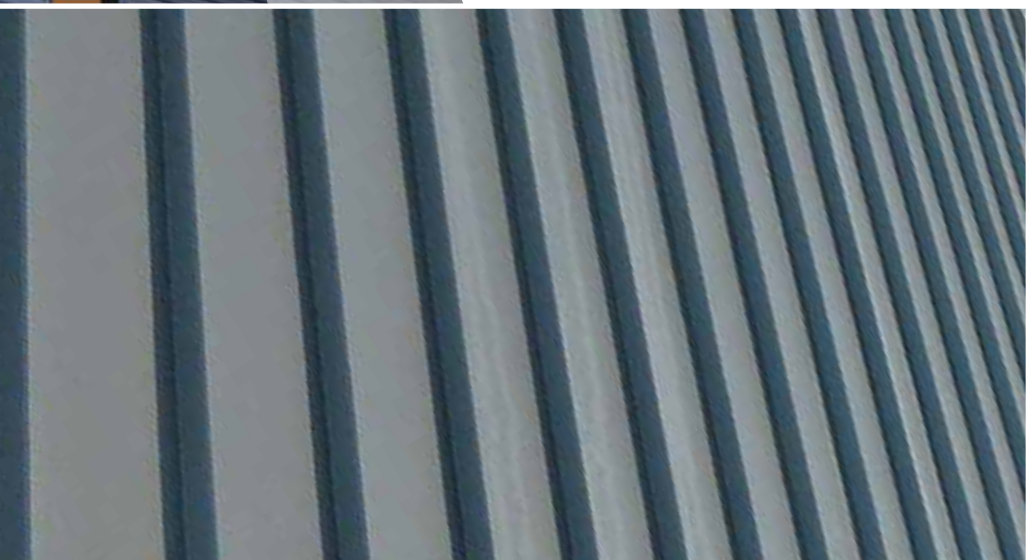


MONOPANEL®

Featuring an angled rib and flat face, Monopanel® wall cladding is the profile of choice for those looking for clean subtle lines.

With a concealed fixing, this walling profile provides an elegant, yet understated finish to any structure.

Available NSW, ACT, VIC, SA, TAS.



C-CLAD 280

Boasting traditional lines to enhance any structure.

Let your design be the hero with C-Clad 280 wall sheeting. The crisp, traditional lines of this profile will complement any project. Suitable for horizontal and vertical installations, and designed with durability in mind.

Available QLD, NT.